

# Ribbon Inspector

for **fiber optic ribbon**



## > High Speed Ribbon Inspection for Fiber Ribbon

The Ribbon Inspectors continuous capture mode of operation provides the operator with up to the second digital image feedback of the current status of Fiber Optic Ribbon. With Taymer's Ribbon Inspector, you can be sure the product going to your customers meets your high standards and is without ribbon defects.

## > Reduced Defects

The Ribbon Inspector provides the operator with a view of current ribbon images, recent defect images with defect dimensions, and verification of the color sequence. This continuous stream of real time information – especially failure data - allows the operator to isolate the causes of ribbon imperfections or missing fiber strands. Identifying when and how a defect occurs will allow your technical staff to reduce occurrences of defects causing expensive reworking costs and prevent customer complaints and rejects.

## FEATURES

- > Accurately measures fiber optic ribbon width and thickness
- > Supports line speeds as fast as 4500 ft/min or 1500 m/min
- > Precisely examines ribbon planarity and gap distance between fiber strands
- > Up to 36 fiber strands ribbon can be inspected
- > Detects if any fiber strands are missing from ribbon
- > Alerts operator and production machinery if any defects are found
- > Verifies the ribbon color sequence is correct at line startup, and during the run
- > Records any defects for QA records and operator verification
- > Inspects fiber strands for missing ink and large hue shifts in color
- > Simple, Push Button Operator Interface – no computer knowledge required

# SPECIFICATIONS

## Width/Thickness Measurement Accuracy:

1.5 micron and up | 0.000059" and up  
Depends on product and camera setup

## Planarity Tolerance:

± 25 micron | 0.00098"

## Fiber Gap Measurement:

± 10 micron | 0.00039"

## Maximum Line Speed:

1 500 m/min | 4,500 ft/min  
Exact speed will depend on application

## Maximum Ribbon Width:

36 fiber strands

## Outputs:

Relay contact closure on defect detection  
Alarm stack (light/audio alarm)

## Power Supply:

110V or 230V, 50/60Hz

## Inspection Software:

Gain and contrast enhancement  
Edge detection with pattern matching

## Dimensions:

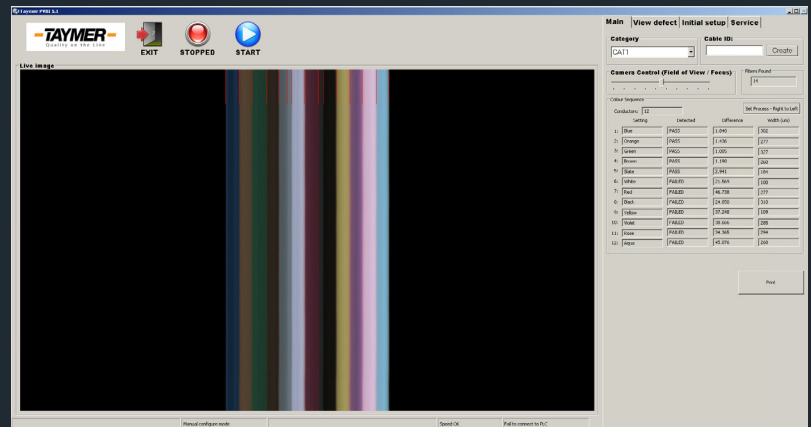
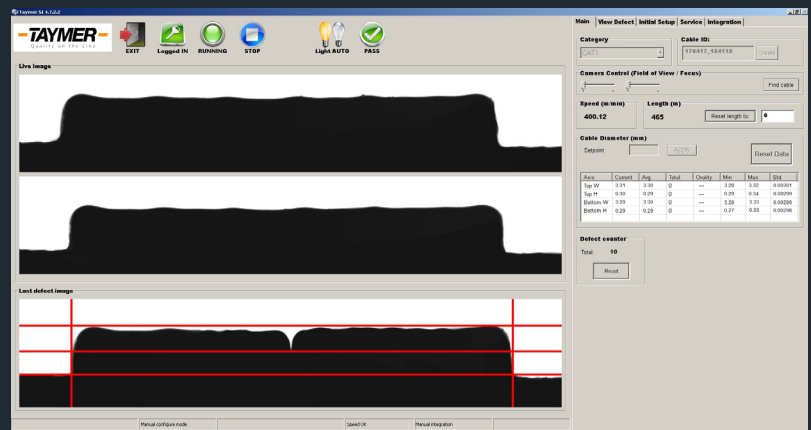
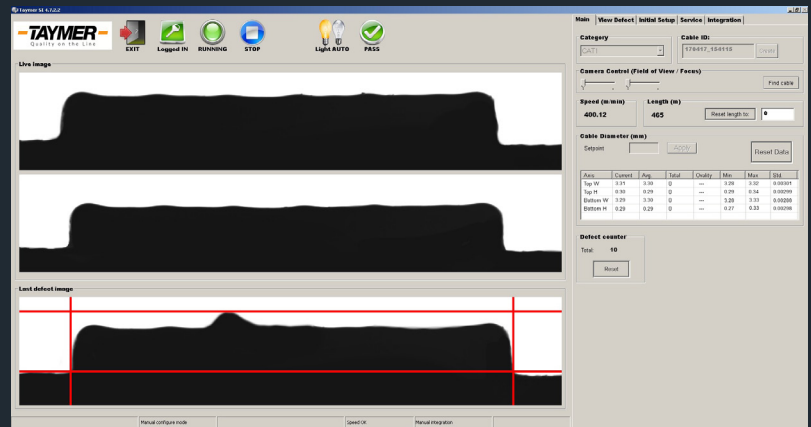
510 mm x 510 mm x 1520 mm - L x W x H  
20" x 20" x 60" - L x W x H  
Line height is adjustable

## Weight:

55 kg | 120 lbs.

## LCD Display:

22" monitor



**-TAYMER-**

+1 905 479 2614

info@taymer.com

+1 905 479 2636

www.taymer.com

Taymer International Inc. - 208 Telson Road Markham, ON L3R 1E6 - CANADA