

## Band Inspection System for Wire & Fiber Manufacturers

The Band Inspection System is the only tool available to automatically inspect band quality on coloring lines. The Band Inspection System is also capable of measuring diameter in 1 or 2 axes (optional). These features will help you reduce costs in your production facilities through reduced rework and quality assurance.

The Band Inspection System uses high-speed, digital imaging to capture real time images of the fiber band markings. The digital images are enhanced, magnified and displayed on a monitor, enabling the operator to properly set up, visually confirm the bands, measure diameter and preview errors. The system is closely integrated with the line so that if any missing bands or diameter defects are detected, the operator is notified and the location and image is logged.

The operator's console can be located up to 60 meters (200 feet) from the Image Capture Station, allowing one operator to supervise multiple lines simultaneously.



The diameter measurement upgrade allows the BI1800 to measure diameter up to **100 times the rate of laser gauges**. Perfect for high line speed measurement. 1 or 2 axis diameter measurement options are available.

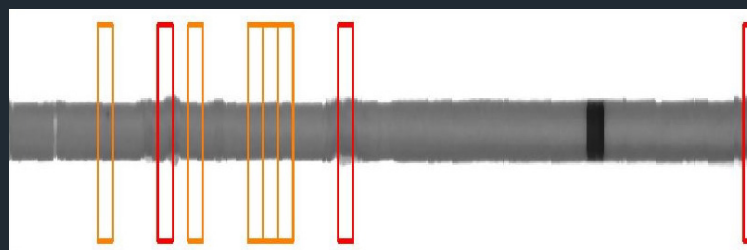
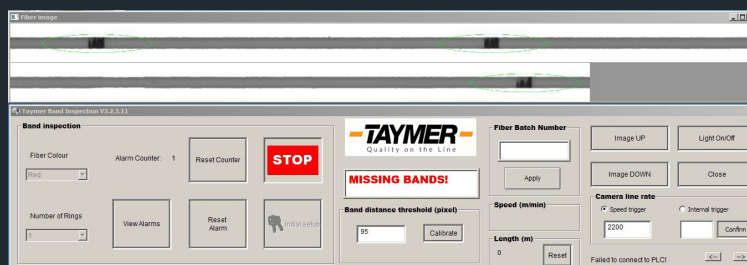
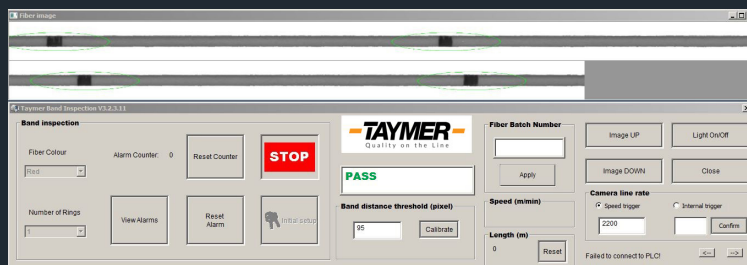
## FEATURES

- Captures Line Speeds up to 3 000 m/min or 9,800 ft/min
- Band inspection system designed to integrate seamlessly with production line PLC
- Images of defective bands are captured and provide complete Quality Assurance documentation
- Small Footprint, LCD, Flat Panel Display
- Operator Interface integration
- Modular design allows unit to be easily mounted to machines in the field



# SPECIFICATIONS

- **Maximum Speed:** (depends on application)  
1500 meters per minute  
5000 feet per minute
- **Smallest Wire Diameter:** (depends on application)  
100 microns (0.0039")
- **Diameter Measurement Accuracy:**  
up to  $\pm 2$  micron ( $\pm 0.000078$ ")
- **Wire Surface Color:** Any Colors or Clear
- **Touch Screen Controls:**  
Save Image  
Brightness and other settings
- **Capture Station Weight:** 3 kg | 7 lbs
- **Capture Station Dimensions:**  
120mm x 120mm x 250mm (L x W x H)  
5" x 5" x 10" (L x W x H)
- **Mount:** Directly on machine or optional stand
- **Input:** Length Measuring Encoder
- **Output:** Dry relay contact to signal errors
- **Calibration:** Easily programmable using standard keyboard
- **LCD Display:** 22"
- **Power:** 110 or 220 VAC, 50/60 Hz



Neckdown | Lump

# -TAYMER-

+1 905 479 2614

+1 905 479 2636

info@taymer.com

www.taymer.com

Taymer International Inc. - 208 Telson Road Markham, ON L3R 1E6 - CANADA