



SPECIFICATIONS

> Maximum Line Speed:

400 m/min | 1,300 ft/min
Exact max speed will depend on specific application

> Minimum Detectable Defect Size:

0.025 mm and up | 0.001" and up
Depends on line speed and tubing diameter

> Outer Diameter Range:

0.01 mm - 30 mm | 0.0004" - 1.18"
Other diameters available upon requests

> Camera Configuration:

3 camera - 100% coverage of tube circumference

> Pixels/mm²: ~100,000 for small diameter tubing

> Types of Defects Detected:

Gels, voids, pin holes, neck downs, bulges, scratches, contaminants, and discolorations or other imperfections on medical tubing

> Percent Overlap Between Images: 5%

> Dimensions:

Without stand:

229 mm x 559 mm x 483 mm - L x W x H
9" x 22" x 19" - L x W x H

With stand: (Custom stands can be built)

840 mm x 635 mm x 1625 mm - L x W x H
33" x 25" x 64" - L x W x H

> Location:

Before Printer, on tubes without print legends. Can optionally be installed after the printer

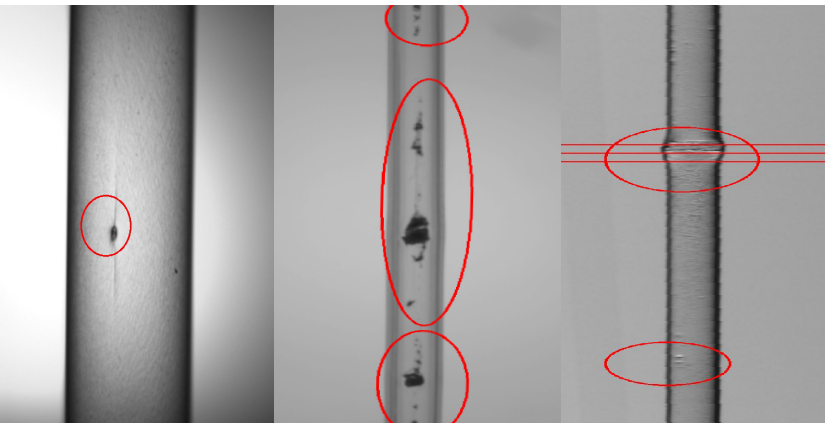
> Power Supply: 110V or 220V, 50/60Hz

> Weight: 200 kg | 450 lbs.

> Lighting: LED

> Image Processing:

All images from all cameras are read, enhanced and analyzed, resulting in 100% product coverage at the maximum line speed



-TAYMER-

+1 905 479 2614

+1 905 479 2636

info@taymer.com

www.taymer.com

Taymer International Inc. - 208 Telson Road Markham, ON L3R 1E6 - CANADA