

LUMP AND NECK-DOWN DETECTOR



> Images of Lump and Neck-Down Defects

Introducing the 3-axis camera lump and neck-down detector, meticulously crafted to capture and evaluate dimensional defects present on cable jackets, pipes, and tubes. Defect images are instantaneously captured and saved with the defect's dimensional information and location. The LN3800 is a vital tool for evaluating your product integrity on your production or rewind line.

> Multi-Axis Diameter Measurements

The LN3800 system is designed to offer comprehensive lump and neck-down detection as well as multi-axis diameter measurement across the entirety of your product's length. Harnessing the power of three precision axes, this innovative system adeptly captures diameter variations with exceptional accuracy. This data can be seamlessly integrated with other in-line machinery, facilitating a streamlined and automated workflow. Empower your engineers and operators with a user-friendly interface display. Gain real-time insights into your products as they undergo measurement, and enable operators to detect and address lumps/neck-downs on the fly before defective products reach customers or result in field failure. The LN3800 system puts control at your fingertips.

> Quality Assurance

Captured defects are saved and can be used for internal and external quality reporting. Images make it easy for the viewer to understand the defects detected. Dimensional and location information are included with all images, whether for lumps, neck-downs, and diameter defects.

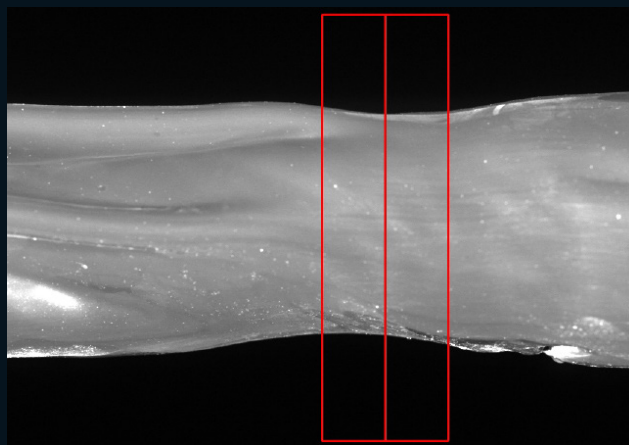
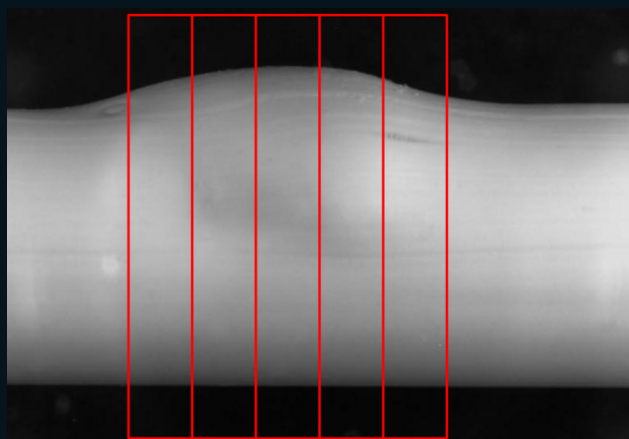
FEATURES

- > Detects bulges, neck-downs, and lumps on cable, tubes, and bare wires
- > Outer diameters of 0.1 mm | 0.0039" can be detected
- > 3-camera configuration to provide 360° coverage of your product
- > Supports line speeds up to 1000 m/min
- > Saves defect images and length information as they are detected
- > Alerts operator and production machinery if defects are found
- > Accurately measures and records product diameter along 3-axis for the whole product length



SPECIFICATIONS

- > Maximum line speed:
 - 1000 m/min | 3280 ft/min
- > Cable diameter range:
 - 0.01 mm and up | 0.0039" and up
- > Pixels per mm²:
 - ~ 300 for 0.01 mm | 0.0004" diameter
- > Types of defects detected:
 - Neck-downs
 - Bulges
 - Diameter variation
 - Lumps
- > Image processing:
 - Images from cameras are read, enhanced and analyzed, resulting in 100% coverage at max line speed
- > Lighting: LED
- > Power supply: 110 V or 220 V



TAYMER

☎ +1 905 479 2614

✉ info@taymer.com

Send samples to:
Taymer International Inc.
208 Telson Road
Markham, ON L3R 1E6
CANADA