

SURFACE DEFECT DETECTION



➤ Precise Length Measurement Accuracy

The single camera print length verification system inspects your marked cable to ensure that it is marked in 1 meter or 2 feet increments. The system utilizes a continuous-recalibration feedback loop. This function allows you to be sure that the marked cable that goes through your production line is accurate and in sync with the rest of your length measurement equipment.

➤ Reduced Defects

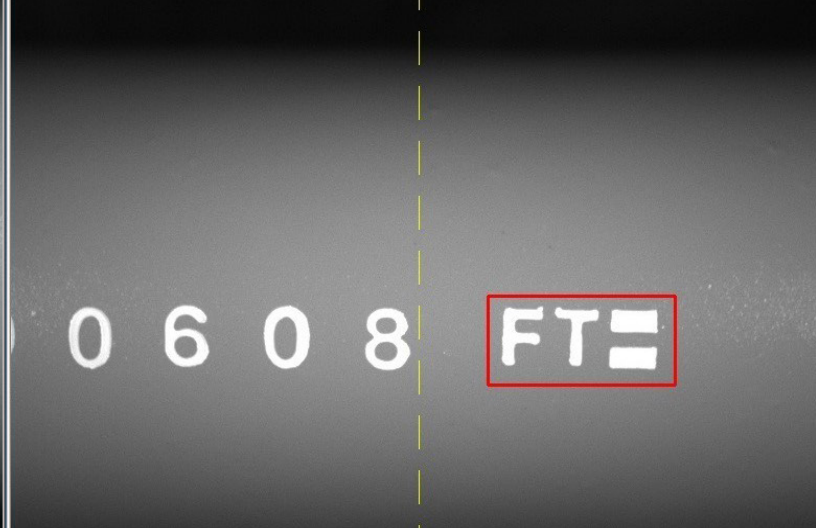
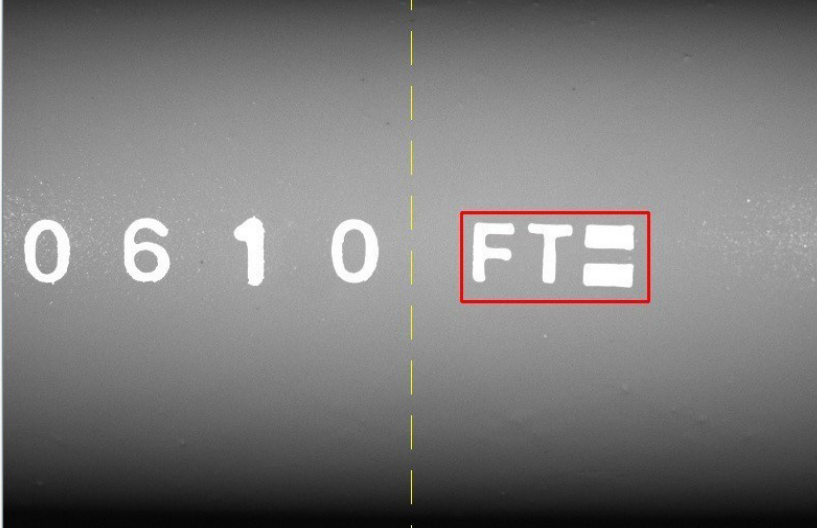
The PLV connects directly to the servo drive on your Taymer Hot Foil Printer that allows you to make adjustments on the fly. As the system is detecting defects it is empowering the operator to make adjustments to the marking machine with real time information provided by the continuous-recalibration feedback loop. You will have less defects at the end of a production cycle because the operator can take corrective action as soon as defects are detected.

➤ Quality Assurance

The PLV1500-S is equipped with Taymer's image viewing technology. It detects the defects, alerts the operator and saves the length measurement data (standard deviation). Allowing you to find the defects post production while having the information to deliver a detailed quality report.

FEATURES

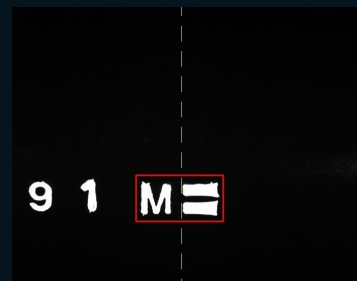
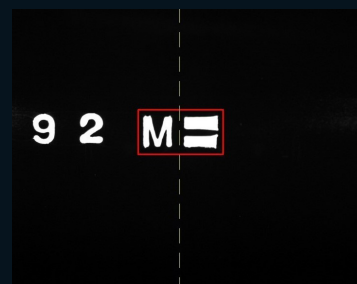
- Allows for automated length verification and automatic recalibration of printed length markings for Taymer HF printers
- Pulls and displays length data from multiple sources (extruder, length counter, etc.)
- Remote view station allows operators to view current length accuracy statistics from remote locations
- Each print verified against +/- 0.5 mm per meter certified standard



SPECIFICATIONS

- > Maximum Line Speed:
 - 450 meters per minute
 - 1500 feet per minute
- > Input: Length measurement encoder
- > Push Buttons:
 - Scroll left / right
 - Freeze image
 - Save image
 - Brightness
- > LCD Display: 17"
- > Character Size:
 - 0.75 mm - 12 mm
 - 0.0030" - 0.500"
- > Lighting: LED
- > Dimensions (L × W × H):
 - 815 mm × 610 mm × 1780 mm
 - 32" × 24" × 70"
- > Camera Configuration: Single camera
- > Image Processing:

All the images from all the cameras are read, enhanced and analyzed, resulting in 100% product coverage at maximum line speed
- > Power Supply: 110 V or 230 V
- > Weight:
 - without stand 5 kg / 11 lbs
 - with stand 25 kg / 55 lbs



TAYMER

+1 905 479 2614

info@taymer.com

Send samples to:

Taymer International Inc.
208 Telson Road
Markham, ON L3R 1E6
CANADA