

## Print Verification for Wire and Cable, Pipe and Conduit



- The Print View 1400 is the only tool available for operators to completely and automatically verify and guarantee print quality on high speed production lines. This will help you reduce costs in your production facilities through reduced rework and improved productivity.

The Print View 1400 uses high-speed, digital imaging to capture real time images of cable markings. The digital images are enhanced, magnified and displayed on a monitor, enabling the operator to properly set up and monitor cable printers before poor print causes expensive waste.

The PV1400 can include an automatic Print Quality Inspector. This feature continuously compares the current cable image to the image taught to the system by the operator at the beginning of the run. The teaching process is simple and only requires the use of a pushbutton. Very small changes in legend can be detected and the sequential numbering can also be accounted for. Any deterioration of print quality and the PV1400 will send a signal to external alarms and machinery.

The operator's console can be located up to 300 feet or 90 meters from the Image Capture Station, allowing one operator to supervise two or three lines simultaneously.

## FEATURES

- Captures Line Speeds as fast as 3,200 feet/minute or 1,000 meters/minute
- Unique technology removes cable twist from images
- Characters as small as 0.012" or 0.3 mm can be frozen, magnified and easily read
- Print Quality Inspector sends alarm signal to alert the operator
- Small Footprint, LCD, Flat Panel Display
- 'Save Image' feature provides complete Quality Assurance documentation
- Includes verification tool for sequential markings
- Verifies print quality of any printer including: Inkjet, Ink Wheel, Hot Foil
- Simple, Push Button Operator Interface

# SPECIFICATIONS

## > Maximum Line Speed:

1,000 meters / minute  
3,200 feet / minute

## > Push Buttons:

Scroll Left/Right  
Freeze Image  
Save Image  
Brightness

## > Capture Station Dimensions:

Without Stand:

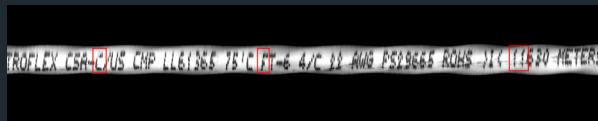
Panel 762 mm X 508 mm X 153 mm - L X W X H  
30" X 20" x 6" - L X W X H  
Camera Box 127 mm X 254 mm X 101 mm - L X W X H  
5" X 10" x 4" - L X W X H

With Stand:

813 mm X 610 mm X 1778 mm - L X W X H  
32" X 24" x 70" - L X W X H

## > Monitor Dimensions:

508 mm X 305 mm X 77 mm - L X W X H  
20" X 12" x 3" - L X W X H



## > Character Size:

0.3 mm and up / 0.012" and up

## > Capture Station Weight:

Without Stand 5 kg / 11 lbs  
With Stand 25 kg / 55 lbs

## > Operator Console Weight:

5 kg / 11 lbs

## > Stand Mount: Height and depth adjustable

## > Input: Length measurement encoder

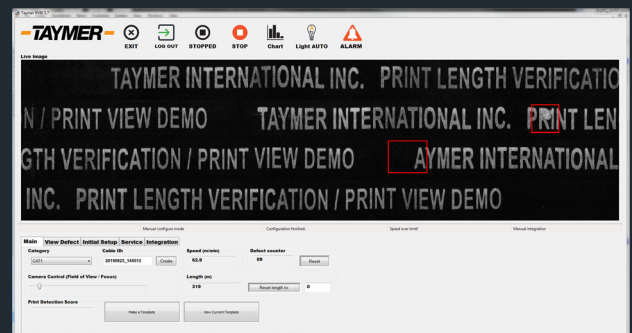
## > Calibration:

Easily programmable using standard keyboard

## > Power:

115 VAC 50/60 Hz  
220 VAC 50/60 Hz

## > Location: After the printer



# -TAYMER-

+1 905 479 2614

+1 905 479 2636

info@taymer.com

www.taymer.com

Taymer International Inc. - 208 Telson Road Markham, ON L3R 1E6 - CANADA