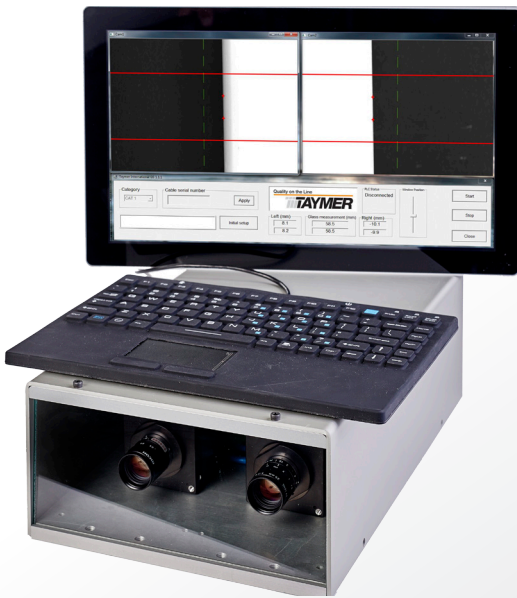


Camera Inspection for Glass Fiber Preform



› Accurate Measurements of Preform Diameter

The GS2100 is the only tool that can continuously measure the glass preform rod during the stretching process to ensure the resultant preform diameter is both consistent and accurate. This system connects to your PLC to automatically provide the feedback that is critical to produce the preform

› Reduce Product Rework

The Glass Stretching Measurement System's Continuous Capture provides the operator and connected with uninterrupted measurements of the current diameter during the stretching process. This continuous stream of real time information allows the operator to monitor the diameter and gives him or her the time to react to correct problems before they result in reworking or even scrapping of product.

› Quality Assurance

Using the Glass Stretching Measurement System, you can save the measured diameters to disk and print them out to include in your quality reporting both internally and to your customers. The Glass Stretching Measurement System makes it possible for operators to verify diameter settings at shift changes and for engineering and production supervisors to verify the diameters while briefly walking past the operator's console.

FEATURES

- › Measures diameter of glass preform during glass stretching process while preform is inside the furnace
- › Alerts operator and production machinery if any diameter defects are found that are out of specifications
- › Automatically provides measurement feedback to external machinery PLCs
- › Records any defects for QA records and operator verification
- › Camera enclosure to protect sensitive equipment
- › Simple user interface and operation



SPECIFICATIONS

➤ Glass Diameter Range:

10 – 150mm | 0.4" - 6"

Exact diameter depends on application and desired accuracy

➤ Diameter Measurement Tolerance:

± 0.2mm | ± 0.007"

➤ Camera Configuration:

2 Camera – Side by side

➤ PLC Integration:

Integrates with most models of PLC including Siemens and Allen Bradley

➤ Industrial Stand:

Optional – Custom stands and mounting positions can be built

➤ Image Processing:

Images from both cameras are simultaneously analyzed and resultant diameter is generated

➤ Lighting:

None required

➤ Location:

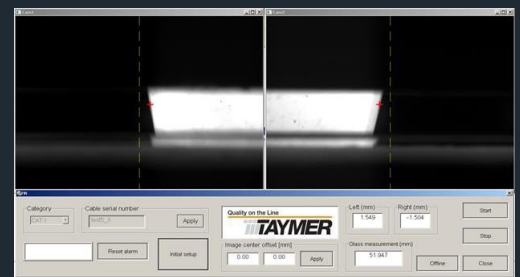
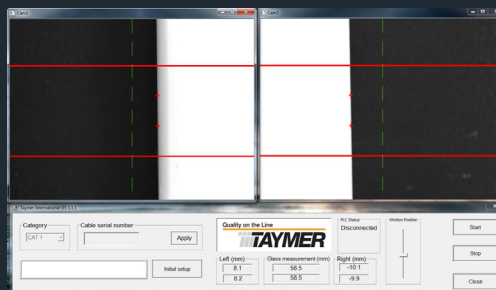
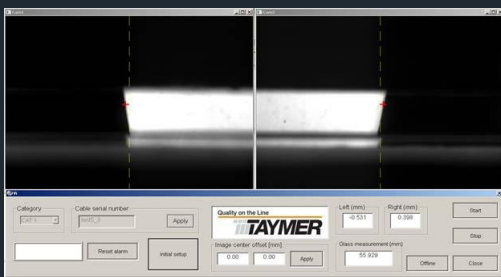
Outside preform furnace – with cameras viewing into furnace

➤ Dimensions:

500mm X 250mm X 125mm – L X W X H
20" X 10" X 5" – L X W X H

➤ Power Supply: 110V or 230V, 50/60Hz

➤ Weight: 45 kg | 10 lbs.



-TAYMER-

☎ +1 905 479 2614

🖨 +1 905 479 2636

✉ info@taymer.com

🏠 www.taymer.com

Taymer International Inc. - 208 Telson Road Markham, ON L3R 1E6 - CANADA